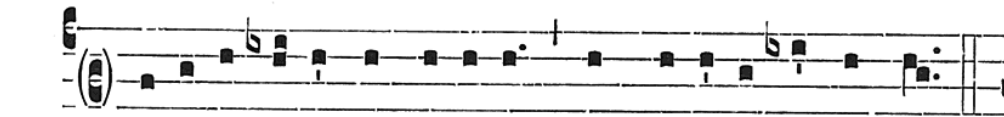


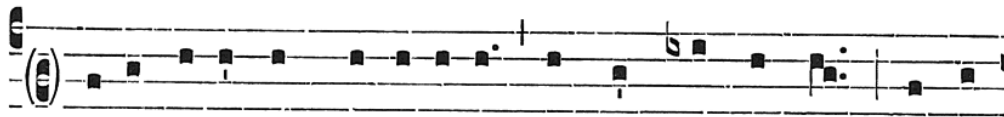
III. — Tonus ad « Gloria Patri » in Psallendis.

1° Pro Psallendis quae terminant in tonica *Re* (vel *Mi* in transpositione).

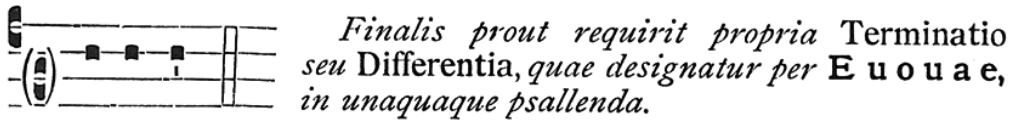
a) *Cum nota recitativa la.*



V. Gló-ri- a Patri, et Fí- li- o, et Spi-rí-tu- i Sancto.



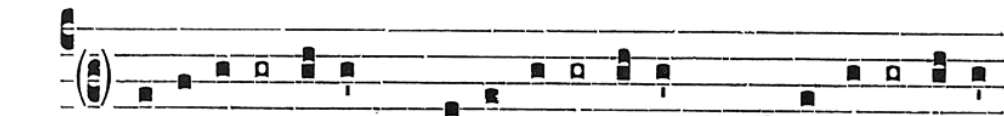
R̄. Sic-ut e-rat in princí-pi- o, et nunc, et semper : et in



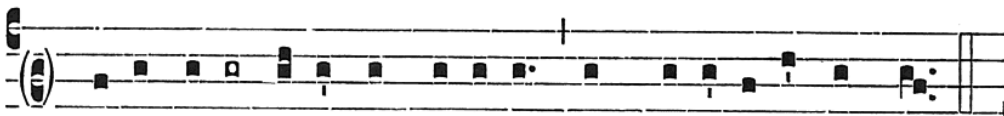
Finalis prout requirit propria Terminatio seu Differentia, quae designatur per E u o u a e, in unaquaque psallenda.

saécu-la...

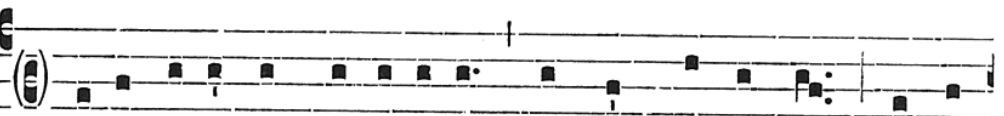
b) *Cum nota recitativa sol.*



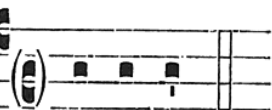
V. Gló-ri- a Patri, vel Gló-ri- a Patri, vel Gló-ri- a Patri,
Sic-ut e-rat Sic-ut e-rat Sic-ut e-rat



vel Gló-ri- a Patri, et Fí- li- o, et Spi-rí-tu- i Sancto.
Sic-ut e-rat



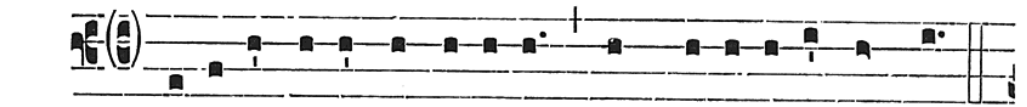
R̄. Sic-ut e-rat in princí-pi- o, et nunc, et semper : et in



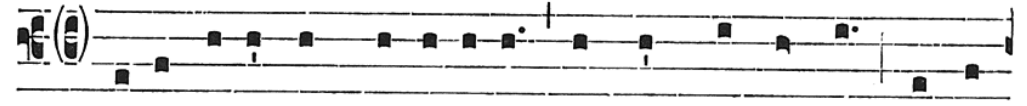
saécu-la...

III. — Tonus ad « Gloria Patri » in Psallendis. 841

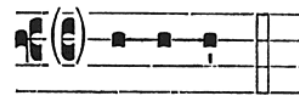
c) *Cum nota recitativa fa vel do.*



V. Gló-ri- a Patri, et Fí- li- o, et Spi-rí-tu- i Sancto.

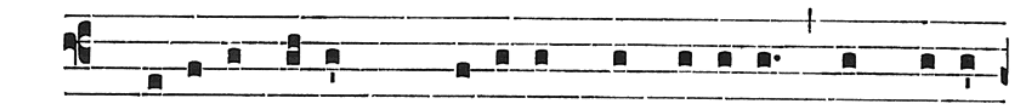


R̄. Sic-ut e-rat in princí-pi- o, et nunc, et semper : et in



saécu-la...

d) *Cum nota recitativa mi.*



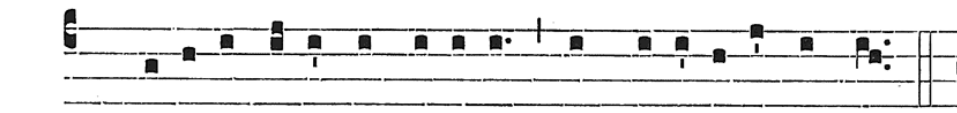
V. Gló-ri- a Patri, vel Gló-ri- a... et Fí- li- o, et Spi-rí-
Sic-ut...
et in...



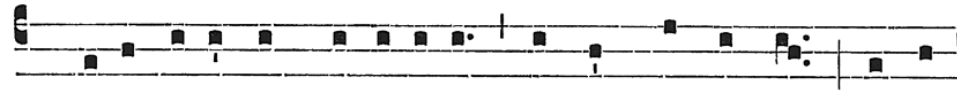
tu- i Sancto. R̄. Sic-ut e-rat in princí-pi- o, et nunc, et



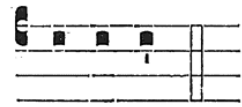
semper : et in saécu-la...

2° Pro Psallendis in tonica *Mi* (vel *Si* in transpositione).a) *Cum nota recitativa si.*

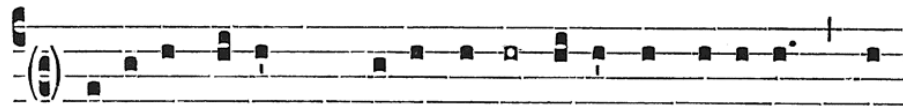
∇. Gló-ri- a Patri, et Fí- li- o, et Spi- rí- tu- i Sancto.



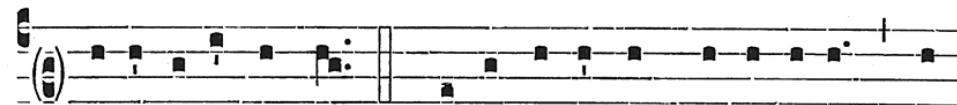
℞. Sic-ut e-rat in princí- pi- o, et nunc, et semper : et in



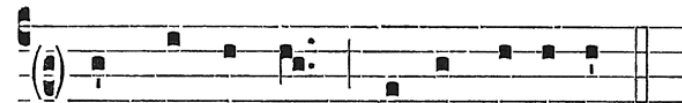
saécu- la...

b) *Cum nota recitativa do, ut in 3°.*c) *Cum nota recitativa la (vel mi in transpositione).*

∇. Gló-ri- a Patri, vel Gló-ri- a Patri, et Fí- li- o, et
Sic-ut e-rat...
et in...



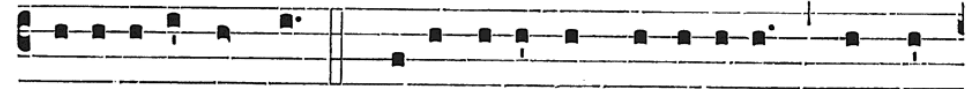
Spi- rí- tu- i Sancto. ℞. Sic-ut e-rat in princí- pi- o, et



nunc, et semper : et in saécu- la...

d) *Cum nota recitativa sol, ut in 1°, b.*e) *Cum nota recitativa fa, ut in 1°, c.*f) *Cum nota recitativa mi, ut in 1°, d.*g) *Cum nota recitativa do, ut in 3°, vel 4°, sequentibus.*3° Pro Psallendis in tonica *Fa*.a) *Cum nota recitativa do.*

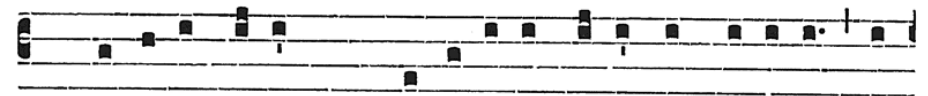
∇. Gló-ri- a Patri, vel Gló-ri- a Patri, et Fí- li- o, et



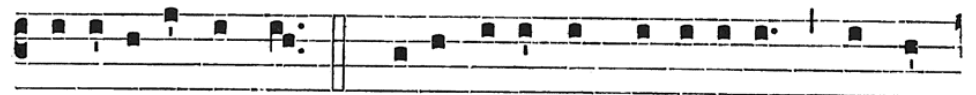
Spi- rí- tu- i Sancto. ℞. Sic-ut e-rat in princí- pi- o, et nunc,



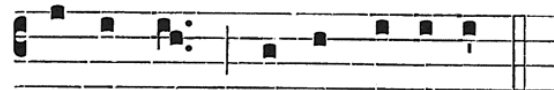
et semper : et in saécu- la...

b) *Cum nota recitativa la, ut habetur in 1°, a.*c) *Cum nota recitativa sol, ut in 1°, b, ultimo loco.*4° Pro Psallendis in tonica *Sol*.a) *Cum nota recitativa re.*

∇. Gló-ri- a Patri, vel Gló-ri- a Patri, et Fí- li- o, et
Sic-ut e-rat...
et in...



Spi- rí- tu- i Sancto. ℞. Sic-ut e-rat in princí- pi- o, et nunc,



et semper : et in saécu- la...

b) *Cum nota recitativa do, ut in 1°, c.*c) *Cum nota recitativa si, ut in 2°, a.*d) *Cum nota recitativa sol, ut in 1°, b, ultimo loco.*e) *Cum nota recitativa la, ut in 2°, c, ultimo loco.*