



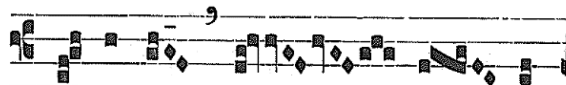
## Dominica I. de Adventu.

v2

INGRESSA.



D te, \* Dó- mi- ne,



le-vá-vi á- ni- mam



me- am : De- us me- us, in te con- fí- do,



non e-ru- bé- scam : ne-que irrí-de- ant me i- ni-



mí- ci me- i : é- te- nim u- ni- vérsi, qui te ex-



spé- ctant, non confun- déntur.

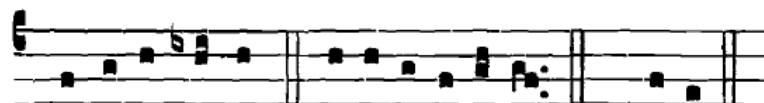


**R**

O- rá- te cae- li dé- super \* et nubes plu- ant ju- stum :



ape- ri- á- tur terra, et gérmí- net Salva- tó- rem.



Gló- ri- a Patri. E u o u a e. Ro- rá- te...



**H**

Alle- lú- jah. \*

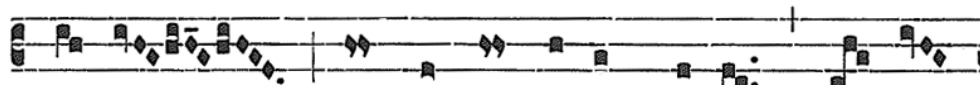
POST  
EVANGELIUM.

**P**

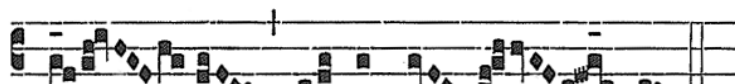
Ar- ce, Dómi- ne, \* par- ce pópu- lo tu- o :



et ne des haere- di- tá- tem tu- am in oppró-



bri- um : ne quando di- cant gentes : U- bi



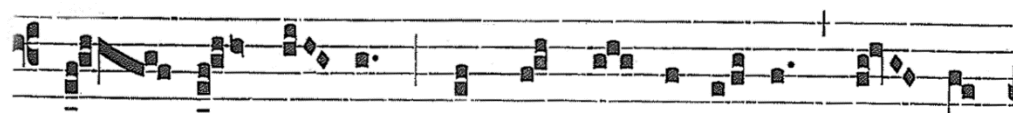
est De- us e- ó- rum?

CONFRA-  
TORIUM.

**D** I-ri-ge me \* in ve-ri-tá- te tu- a,



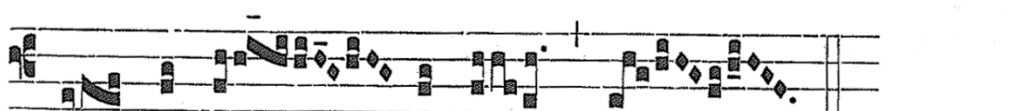
et do- ce me : qui- a tu es



De- us me- us, et te su- stí- nu- i to- ta



di- e. Ete- nim u- ni- vérsi, qui te expé- ctant,

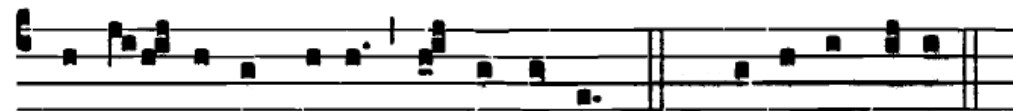


non confun- déntur.

PSALLEND A

I.

**Q** UI emít- tit \* e- lóqui- um su- um terrae,



ve- ló- ci- ter currit sermo e- jus.  $\Psi$ . Gló- ri- a Patri.



E u o u a e. Qui emít- tit...

TRANS-  
TORIUM.

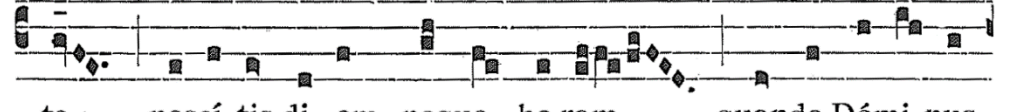
**S** Ic- ut fulgur \* ve- nit ab O- ri- én- te,



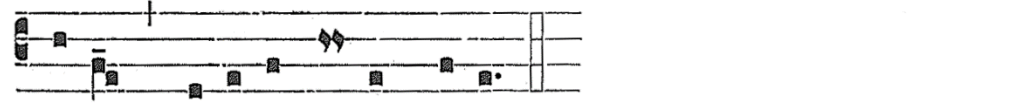
et pa- ret in Occi- déntem : sic e- rit advén-



tus Fí- li- i hó- mi- nis. Vi- gi- lá- te o- mnes, et o- rá-



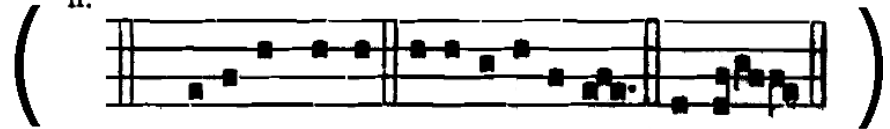
te : nescí- tis di- em, neque ho- ram, quando Dómi- nus



noster saécu- li fi- nem ponat.

PSALLEND A

II.



$\Psi$ . Glóri- a Patri. E u o u a e. Sic- ut...

SALMO ANNO A



$\Re$  Vie ne, il no- stro Di- o, vie- ne e si ma- ni- fe- sta.